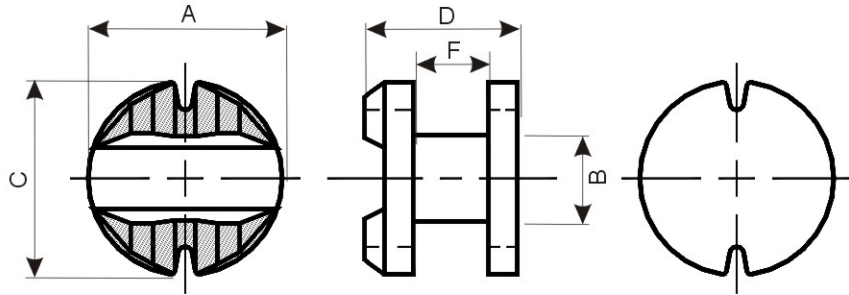


[DR TYPE]

Silver Plated Type

面实装 POWER CHOKE CORES 鍍銀型



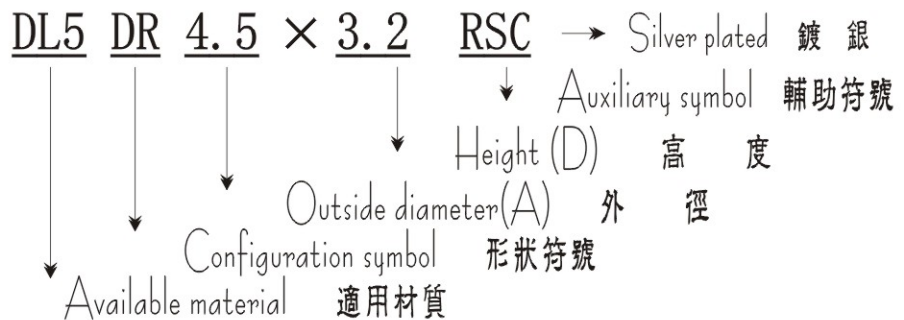
FEATURES 特長

提供高飽和磁通密度，耐大電流，低阻抗之表面四層電鍍處理之表面粘著磁芯。

Four layers of electrode treatment surface mount cores offer high Bm, low DC resistance, power choke.

PRODUCT IDENTIFICATION

產品識別碼



USEAGE 用途

小型通信器
 手提電腦
 VTR照相機
 液晶電視
 Portable communication equipment;
 Notebook PC;
 Camcorder;
 LCD Television Set.

DIMENSION 尺寸

UNIT:m/m

Core Order Code	A	B	D	F
DR 4.5X3.2 RSC	4.5±0.15	2.0±0.15	3.2±0.15	1.0±0.10
DR 5.6X4.5 RSC	5.6±0.15	2.4±0.15	4.5±0.15	2.1±0.15
DR 7.5X5.0 RSC	7.5±0.20	3.5±0.15	5.0±0.15	2.4±0.15
DR 9.5X5.5 RSC	9.5±0.20	4.5±0.15	5.5±0.15	3.0±0.15